

2016 Japanese SUPER FORMULA Championship Series

MEDIA INFORMATION

March 13, 2016

Series Partner

HONDA TOYOTA

Series Supporter

YOKOHAMA

Promotion Partner

HITACHI
Inspire the Next
日立オートモティブシステムズ

J SPORTS

SONY
Action Cam

NINKI-ICHI
人気酒造

About SUPER FORMULA

In the 1950s, the Fédération Internationale de l'Automobile (FIA) launched the Drivers' Championship to find the world's fastest driver in formula cars – the purest form of racing machine. That ethos was passed on to all FIA national member organizations.

Top-level formula motor racing has been held in Japan in various forms since 1973, when Formula 2000 was launched. The competition morphed into Formula Two in 1978 and then Formula 3000 in 1987. Japan Race Promotion Inc. (JRP) was established in 1995 and relaunched the competition as Formula Nippon the following year. Hiroshi Shirai, previously project leader on Honda's Formula One race team, became JRP president in 2010. In 2013, the name of the competition was changed again to Japanese Championship SUPER FORMULA and a bold plan was implemented to upgrade the race cars and lift the profile of the competition, with the clear aim of spreading the appeal of SUPER FORMULA from Japan to other parts of Asia and transforming it into a third great open-wheel racing competition after Formula One and Indy Car. (The competition's name will change to the Japanese SUPER FORMULA Championship from the 2016 series).



In the early days, formula racing in Japan was led by top drivers such as Kunimitsu Takahashi, Kazuyoshi Hoshino and Satoru Nakajima, who later competed on the global stage in Formula One. In the Formula 3000 era, Michael Schumacher and Heinz-Harald Frentzen competed in Japan, as did Ralf Schumacher, Pedro de la Rosa, Eddie Irvine and Toranosuke Takagi in the mid 1990s, all tenacious drivers aiming to make it into Formula One.



Satoru Nakajima



Michael Schumacher



Heinz-Harald Frentzen



Eddie Irvine

Series Partner



Series Supporter

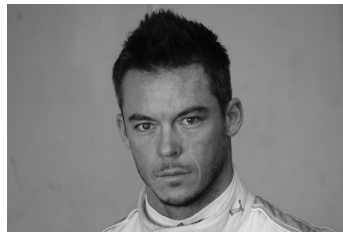


Promotion Partner



About SUPER FORMULA

More recently, drivers such as FIA World Endurance Champion André Lotterer, Benoit Treluyer, Loic Duval and Kazuki Nakajima have been winners of the Japanese Championship. In 2015, Kamui Kobayashi, who competed in Formula One until the previous season, made a triumphant return to Japanese circuits, mesmerizing spectators with his driving skills. This year, Stoffel Vandoorne – GP2 2015 Champion and on the cusp of making his Formula One debut – will compete in the SUPER FORMULA series. Interest from drivers like Vandoorne shows how SUPER FORMULA is increasingly seen as an important competition by the world's top drivers.



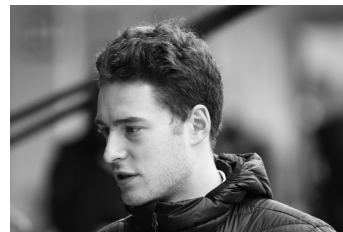
André Lotterer



Kazuki Nakajima



Kamui Kobayashi



Stoffel Vandoorne

The SUPER FORMULA race car chassis is the Dallara SF14, which is based on a quick-and-light design concept. Toyota and Honda supply 2.0-litre turbo-charged inline-4 direct injection engines, while advanced Japanese-made fuel flow restrictors are used to control engine performance. These chassis and engine improvements have resulted in racing cars with greater control and stability, making them highly responsive and agile. Drivers who have competed in SUPER FORMULA say the cars achieve cornering speeds that are even higher than in Formula One. From this season, Yokohama Rubber will become the sole tire supplier, marking its return to the competition after a hiatus of roughly 20 years and heralding a new era in the SUPER FORMULA competition



Excluding the engines, SUPER FORMULA racing cars are essentially single-manufacturer machines, meaning qualifying races are fought over extremely tight margins of less than one second. The outcome of each race comes down to pure competition between drivers and a battle of wits between engineers working to get the most out of the cars.

SUPER FORMULA races are run on world championship tracks such as Suzuka Circuit, Fuji Speedway and Twin Ring Motegi, but also on Sportsland Sugo, Okayama International and Autopolis. Those less well-known tracks have become firm favorites with overseas drivers, because the margin of error is small, making races more exciting and competitive.

Series Partner

HONDA TOYOTA

Series Supporter

YOKOHAMA

Promotion Partner

HITACHI
Inspire the Next
日立オートモティブシステムズ

J SPORTS

SONY
Action Cam

NINKI-ICHI
人気酒造

Race Calendar

Race Events


Round	Circuit	Dates
Rd. 1	Suzuka Circuit	April 23-24
Rd. 2	OKAYAMA International Circuit	May 28-29
Rd. 3	Fuji Speedway	July 16-17
Rd. 4	Twin Ring Motegi	August 20-21
Rd. 5	AUTOPOLIS International Racing Course	September 10-11
Rd. 6	Sportsland SUGO	September 24-25
Rd. 7 (Final Round)	Suzuka Circuit	October 29-30

Note: Round 7 (Final Round) will be held under the event name "15th JAF Suzuka Grand Prix"


Pre-Season Test Schedule

	Circuit	Dates
1st	Suzuka Circuit	March 14-15
2nd	OKAYAMA International Circuit	March 31-April 1

Venues

Suzuka Circuit 

Round 1: April 23-24/Round 7: October 29-30
 Address: 7992 Inou-cho, Suzuka City, Mie Prefecture 510-0295, Japan
 Inquiries: Suzuka Circuit, Tel: 059-378-1111
 URL: www.suzukacircuit.jp



Course Length: 5.807km

OKAYAMA International Circuit 

Round 2: May 28-29
 Address: 1210 Takimiya, Mimasaka City, Okayama Prefecture 701-2612, Japan
 Inquiries: Okayama International Circuit, Tel: 0868-74-3311
 URL: www.okayama-international-circuit.jp




Course Length: 3.703km

Fuji Speedway 

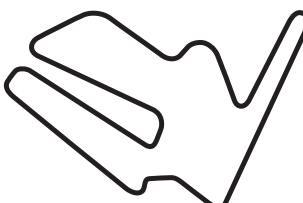
Round 3: July 16-17
 Address: 694 Nakahinata, Oyama-cho, Sunto-gun, Shizuoka Prefecture 410-1307, Japan
 Inquiries: Fuji Speedway Head Office, Tel: 0550-78-1234
 Fuji Speedway Tokyo Office, Tel: 03-3556-8511
 URL: www.fsw.tv



Course Length: 4.563km

Twin Ring Motegi 

Round 4: August 20-21
 Address: 120-1 Hiyama, Motegi-machi, Haga-gun, Tochigi Prefecture 321-3597, Japan
 Inquiries: Twin Ring Motegi, Tel: 0285-64-0001
 URL: www.twinring.jp




Course Length: 4.801km

AUTOPOLIS International Racing Course 

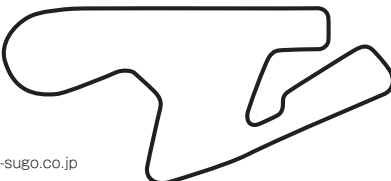
Round 5: September 10-11
 Address: 1112-8 Kaminoda, Kamitsue-machi, Hita City, Oita Prefecture 877-0312, Japan
 Inquiries: Autopolis, Tel: 0973-55-1111
 URL: www.autopolis.jp



Course Length: 4.674km

Sportsland SUGO 

Round 6: September 24-25
 Address: 6-1 Sugo, Murata-machi, Shibata-gun, Miyagi Prefecture 989-1394, Japan
 Inquiries: Sportsland SUGO, Tel: 0224-83-3111
 URL: www.sportsland-sugo.co.jp



Course Length: 3.704km

Series Partner

HONDA TOYOTA

Series Supporter

YOKOHAMA

Promotion Partner

HITACHI
 Inspire the Next
日立オートモティブシステムズ

J SPORTS

SONY
 Action Cam

NINKI-ICHI
 人気酒造

2016 Season Race Format

Race Format

	Dates	Venues	Qualification Style	Race Style	Remarks
Rd.1	April 23-24	Suzuka Circuit	Knock Out	250km	Held jointly with : · Japanese Formula 3 Championship · MFJ Superbike All Japan Road Race Championship · Enjoy Honda* ¹
Rd.2	May 28-29	OKAYAMA International Circuit	Knock Out	250km	Held jointly with : · Japanese Formula 3 Championship · TOYOTA GAZOO Racing PARK* ²
Rd.3	July 16-17	Fuji Speedway	Knock Out	250km	Held jointly with : · Japanese Formula 3 Championship · Enjoy Honda* ¹ · TOYOTA GAZOO Racing PARK* ²
Rd.4	August 20-21	Twin Ring Motegi	Knock Out	250km	Held jointly with : · Japanese Formula 3 Championship · MFJ Superbike All Japan Road Race Championship · Enjoy Honda* ¹
Rd.5	September 10-11	AUTOPOLIS International Racing Course	Knock Out	250km	Held jointly with : · Japanese Formula 3 Championship · MFJ Superbike All Japan Road Race Championship
Rd.6	September 24-25	Sportsland SUGO	Knock Out	250km	Held jointly with : · Japanese Formula 3 Championship · Enjoy Honda* ¹ · TOYOTA GAZOO Racing PARK* ²
Rd.7	October 29-30	Suzuka Circuit	Knock Out	2 Races	· TOYOTA GAZOO Racing PARK* ²

*1 Enjoy Honda is a family-oriented event organized by Honda in which fans can "See", "Play" and "Experience" for themselves.

*2 TOYOTA GAZOO Racing PARK is an event for car-lovers of all ages.

*2 TOYOTA GAZOO Racing Park is still in the planning stages and have not been finalized at this point.

Point Allocation System

		Pole Position	Winner	2nd	3rd	4th	5th	6th	7th	8th	9th and below
One Race per Round		1	10	8	6	5	4	3	2	1	0
Two Races per Round	Race 1	1	5	4	3	2.5	2	1.5	1	0.5	0
	Race 2	1	5	4	3	2.5	2	1.5	1	0.5	0

Notes:

- 1) In the case of a 2-race format, half the number of points shall be awarded in each of the two races except for pole position which brings one point in each race.
- 2) In the particular case of Round 7 (Final Round) in Suzuka Circuit, the winner(s) in race 1 and race 2 shall be awarded an additional 3 points per race. Should the same driver take pole position and the win in both race 1 and race 2, he would earn a maximum of 18 points for the round.
- 3) In the event of any ties for position, the driver or team with superior race results-based on descending order from number of wins to number of second places and so forth-will gain precedence.

Rookie of the Year:

Should there be three or more rookie drivers participating for the first time in the SUPER FORMULA series, the rookie driver with the highest number of points at the end of the season shall be named Rookie of the Year.

Team Points:

- a) Team Points add the points earned by the driver or drivers belonging to the team.
- b) Should a team enter more than two cars at any race event, only the best two results shall be taken into account.
- c) Pole position points shall not be included in the Team Points

Series Partner

HONDA TOYOTA

Series Supporter

YOKOHAMA

Promotion Partner

HITACHI
Inspire the Next
日立オートモティブシステムズ

J SPORTS

SONY
Action Cam

NINKI-ICHI
人気酒造

2016 Entry List

As of March 13

Car No.	Driver	Date of Birth	Country of Origin	Team	Team Manager	Engine
1	Hiroaki Ishiura 	1981/4/23	Japan (Tokyo City)	P.MU/CERUMO · INGING	Yuji Tachikawa	TOYOTA R14A
2	Yuji Kunimoto 	1990/9/12	Japan (Kanagawa Prefecture)			
3	James Rossiter 	1983/8/25	United Kingdom	KONDO RACING	Masahiko Kondo	TOYOTA R14A
4	William Buller 	1992/9/17	United Kingdom			
7	Narain Karthikeyan 	1977/1/14	India	SUNOCO TEAM LEMANS	Kenji Yamada	TOYOTA R14A
8	Kamui Kobayashi 	1986/9/13	Japan (Hyogo Prefecture)			
10	Koudai Tsukakoshi 	1986/11/20	Japan (Tochigi Prefecture)	REAL RACING	Katsutomo Kaneishi	HONDA HR-414E
11	Takuya Izawa 	1984/6/1	Japan (Tokyo City)			
16	Naoki Yamamoto 	1988/7/11	Japan (Tochigi Prefecture)	TEAM MUGEN	Nagataka Tezuka	HONDA HR-414E
18	Yuichi Nakayama 	1991/7/25	Japan (Tokyo City)	KCMG	Ryuji Doi	TOYOTA R14A
19	Joao Paulo de Oliveira 	1981/7/13	Brazil	ITOCHU ENEX TEAM IMPUL	Kazuyoshi Hoshino	TOYOTA R14A
20	Yuhi Sekiguchi 	1987/12/29	Japan (Tokyo City)			
34	Takashi Kogure 	1980/8/1	Japan (Gunma Prefecture)	DRAGO CORSE	Ryo Michigami	HONDA HR-414E
36	Andre Lotterer 	1981/11/19	Germany	VANTELIN TEAM TOM'S	Nobuhide Tachi	TOYOTA R14A
37	Kazuki Nakajima 	1985/1/11	Japan (Aichi Prefecture)			
40	Tomoki Nojiri 	1989/9/15	Japan (Ibaraki Prefecture)	DOCOMO TEAM DANDELION RACING	Kiyoshi Muraoka	HONDA HR-414E
41	Stoffel Vandoorne 	1992/3/26	Belgium			
64	Daisuke Nakajima 	1989/1/29	Japan (Aichi Prefecture)	NAKAJIMA RACING	Satoru Nakajima	HONDA HR-414E
65	Bertrand Baguette 	1986/2/23	Belgium			

Honda Engine: 5 teams, 8 cars
Toyota Engine: 6 teams, 11 cars

Series Partner

HONDA TOYOTA

Series Supporter

YOKOHAMA

Promotion Partner

HITACHI
Inspire the Next
日立オートモティブシステムズ

J SPORTS

SONY
Action Cam

4 NINKI-ICHI
人気酒造

Series Partner / Seris Supporter / promotion Partner

Series Partner

HONDA

Honda Motor Co., Ltd.

<http://www.honda.co.jp/>

TOYOTA

Toyota Motor Corporation

<http://www.toyota.co.jp/>

Series Supporter

**YOKOHAMA**

The Yokohama Rubber Co., Ltd.

<http://www.yrc.co.jp/>

Promotion Partner

HITACHI

Hitachi Automotive Systems, Ltd.

<http://www.hitachi-automotive.co.jp/>

**J SPORTS**

J SPORTS Corporation

<http://www.jsports.co.jp/>

SONY

Action Cam

Sony Corporation

<http://www.sony.com/electronics/action-camera>

**NINKI-ICHI**
人気酒造

NINKI INC.

<http://www.ninki.co.jp/>

Series Partner

HONDA TOYOTA

Series Supporter

**YOKOHAMA**

Promotion Partner

HITACHI
Inspire the Next
日立オートモティブシステムズ

**J SPORTS**

SONY
Action Cam

**NINKI-ICHI**
人気酒造